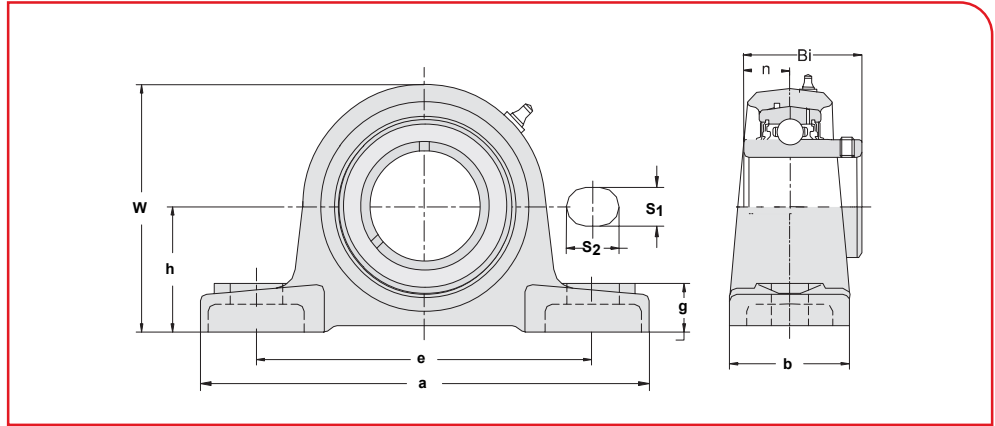


UCP 200 Series Pillow Blocks Normal Duty, Set Screw Locking

Mounted
Units

Mounted
Units



Designation	Shaft Dia.		Dimensions mm										Bolt Size	Bearing No.	Housing No.	Weight kg
	in.	mm	h	a	e	b	S1	S2	g	w	Bi	n				
UCP 201-08	1/2		30.2	124	95	31	11	15	14	62	26	10	5/16	UC 201-08	P203	0.5
UCP 202-10	5/8													UC 202-10		
UCP 201-08	1/2													UC 201-08		
UCP 202-10	5/8	20	33.3	127	95	38	13	19	14	65	31	12.7	3/8	UC 202-10	P204	0.65
UCP 204													M10	UC 204		
UCP 204-12	3/4													UC 204-12		
UCP 205		25												UC 205		
UCP 205-14	7/8													UC 205-14		
UCP 205-15	15/16		36.6	140	105	38	13	19	15	71	34	14.3	3/8	UC 205-15	P205	.8
UCP 205-16	1													UC 205-16		
UCP 206		30												UC 206		
UCP 206-17	1 1/16													UC 206-17		
UCP 206-18	1 1/8		42.9	165	121	48	17	21	17	83	38.1	15.9	1/2	UC 206-18	P206	1.4
UCP 206-19	1 3/16													UC 206-19		
UCP 206-20	1 1/4S													UC 206-20		
UCP 207		35												UC 207		
UCP 207-20	1 1/4													UC 207-20		
UCP 207-21	1 5/16		47.6	167	127	48	17	21	18	93	42.9	17.5	1/2	UC 207-21	P207	2
UCP 207-22	1 3/8													UC 207-22		
UCP 207-23	1 7/16													UC 207-23		
UCP 208		40												UC 208		
UCP 208-24	1 1/2		49.2	184	137	54	17	21	18	98	49.2	19.0	1/2	UC 208-24	P208	2.4
UCP 208-25	1 9/16													UC 208-25		
UCP 209		45												UC 209		
UCP 209-26	1 5/8													UC 209-26		
UCP 209-27	1 11/16		54.0	190	146	54	17	21	20	106	49.2	19.0	1/2	UC 209-27	P209	2.75
UCP 209-28	1 3/4													UC 209-28		
UCP 210		50												UC 210		
UCP 210-30	1 7/8		57.2	206	159	60	20	25	21	114	51.6	19.0	5/8	UC 210-30	P210	3.3
UCP 210-31	1 15/16													UC 210-31		
UCP 210-32	2S													UC 210-32		
UCP 211		55												UC 211		
UCP 211-32	2		63.5	219	171	60	20	25	23	126	55.6	22.2	5/8	UC 211-32	P211	4
UCP 211-34	2 1/8													UC 211-34		
UCP 211-35	2 3/16													UC 211-35		
UCP 212		60												UC 212		
UCP 212-36	2 1/4		69.8	241	184	70	20	25	25	138	65.1	25.4	5/8	UC 212-36	P212	5.8
UCP 212-38	2 3/8													UC 212-38		
UCP 212-39	2 7/16													UC 212-39		
UCP 213		65												UC 213		
UCP 213-40	2 1/2		76.2	265	203	70	25	29	27	151	65.1	25.4	3/4	UC 213-40	P213	6.7
UCP 214		70												UC 214		
UCP 214-43	2 11/16		79.4	266	210	72	25	31	27	157	74.6	30.2	3/4	UC 214-43	P214	7.3
UCP 214-44	2 3/4													UC 214-44		
UCP 215		75												UC 215		
UCP 215-47	2 15/16		82.6	275	217	74	25	31	28	163	77.8	33.3	3/4	UC 215-47	P215	8.1
UCP 215-48	3													UC 215-48		